

Setting Joins in MapViewer

About Setting Joins in MapViewer

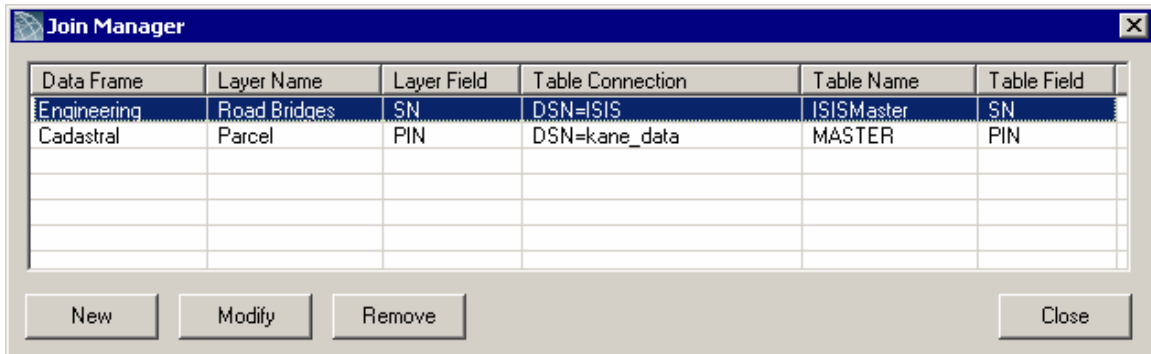
You can set user-defined joins between map layers and external tables. Joins aid in bringing additional data into the map file to make spatial queries and reporting more robust and flexible.

Joins in MapViewer are now managed through the Join Manager.

- To access the Join Manager, click the Settings menu and select Joins...



Joins active in the current MapViewer document are listed in the Join Manager when opened. You can close the Join Manager by clicking the Close button in the bottom-right corner.



Creating New Joins

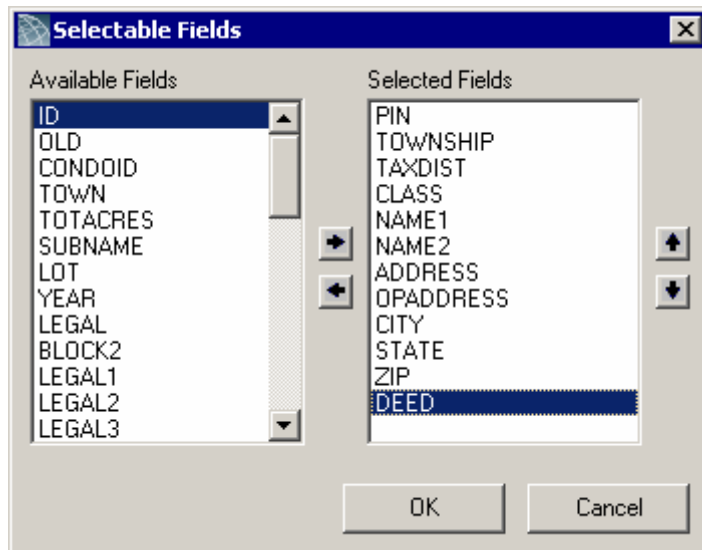
- Click the New button.

The screenshot shows the 'Join' dialog box with the following settings:

- Parcel Layer:**
 - Data Frame: Engineering
 - Layer Name: Road Bridges
 - Field Name: SN
- External Table:**
 - DSN Connection: ISIS | Microsoft Access Driver (*.mdb)
 - Authentication: Windows Authentication, SQL Authentication
 - Username: (empty)
 - Password: (empty)
 - Table Name: ISISMaster (TABLE)
 - Field to base join on: SN
 - Select Visible Fields... button

- In the Join window that appears, make the following selections:
 - **Data Frame:** the data frame containing the source layer to which you wish to join data.
 - **Layer Name:** the source layer.
 - **Field Name:** the source layer field the join is based on.
 - **DSN Connection:** select a data source from the drop list that connects to the desired database. You must set up an ODBC data source prior to creating a new join in MapViewer. Otherwise, the data source will not appear in the list.
 - **Windows/SQL Authentication:** configure the authentication scheme for the data source if necessary. If SQL Authentication is selected, you must enter a username and password.

- **Table Name:** the name of the external data you wish to join. You may need to click the refresh button next to the table name to view the available tables.
- **Field to base join on:** the field you are basing the join on.
- **Selecting Visible Fields**
You can set the fields visible in the results grid when selecting a parcel on the map.



The Available Fields column lists all fields in the join table. The Selected Fields column lists those fields that will be visible in the results grid. You can move field names between the two columns by selecting the field name and clicking either the left or right arrow buttons.

The order in which the field names are listed in the Selected Fields column reflect the order in which they appear in the results grid. You can change the order by selecting fields and clicking the up and down arrow buttons to reposition the field name.

When your selection appears satisfactory, click OK.

Modifying Joins

- Select the join you wish to modify in the Join Manager, and click Modify. You access the same settings window as you would when creating a new join.

Removing Joins

- To remove joins from MapViewer, select the join in the Join Manager, and click Remove.

Multiple Joined Tables

- MapViewer allows more than one table to be joined to a map layer. However, the same table can be joined only once to a given map layer.